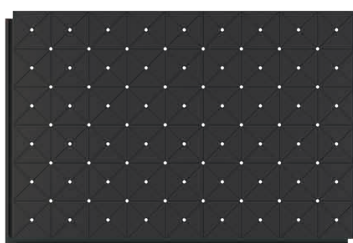
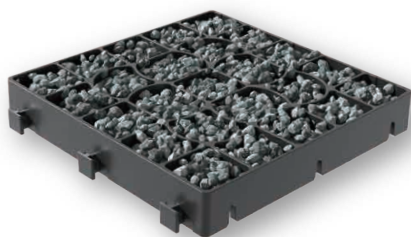


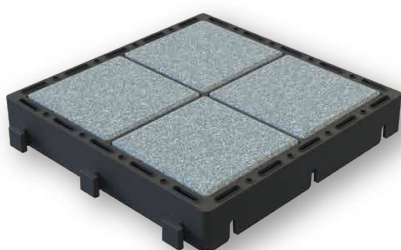
**Garden Edge**



**MoonBase Paver Base Panel**



**Permeable landscape grid**



**Permeable paving grid**

# MoonBay Profile

Hangzhou Moonbay Industrial Co., Ltd is a professional construction material manufacturer integrating obligation with R&D, design, production, sale, and service.

Since its **establishment on July 25, 2013**, we have over **50 engineers** and **more than 150 workers**, the company has developed and produced products such as Garden edge, Paver base panel, permeable landscape/paving grid PP/HDPE Drain channel, Polymer concrete drain channel, Steel pedestal, Adjustable Pedestal, Manhole Cover, Aluminum Decking, Garden Edge, Tile Leveling System, etc... with **32 innovative patents**. Heavy duty paver snapping edge has all the features, that strongly secure the interlocking pavement system and will keep it looking beautiful through many years, This edge system can be used on straightaways, curves, and even a complete radius without waste.

Being honest, professional, innovative and positive is our business concept. Offering great quality products and excellent service is one of our mission.

Moonbay factory located in Zhuji, Shaoxing with **13000 SQM area**. There are over **60 automatic production Lines**. Moonbay building materials support **10,000+ projects** every year. It's now world-famous brand and hot selling in Europe, Asia, Australia, North America. We look forward to cooperating with you.



**13000+**

*13000 SQM area factory*



**30+**

*Innovative patents*



**60+**

*Automatic production Line*



**60+**

*Sales around the world*





# 2024 GARDEN EDGE SYSTEM



# Heavy Duty Paver Snapping Edge

Heavy duty paver snapping edge has all the features that strongly secure the interlocking pavement system and will keep it looking beautiful through many years

This edge system can be used on straightaways, curves and even a complete radius without waste

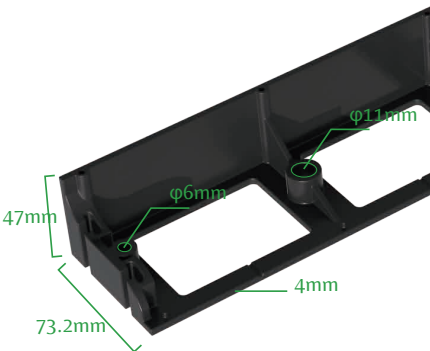
2.4m/pc



## Advantages:

- Incorporating features that provide strength and stability
- Thick back walls that are reinforced by buttresses giving the strength needed to keep the pavement system in place
- Strong interlocking joint held together with a spike to make a secure connection
- Reinforced spike bosses securely hold edging in place
- Plastic spike and steel spike available for choice
- Open base design allows for grass growth along paver edge creating a strong and invisible edge
- Made of 100% recycled PP (Polypropylene): Resists warping, twisting and breaking

## Available sizes:



Product	Heavy duty paver snapping edge (2.4m/pc)
Package	Pallet package
Height (mm)	47mm
Weight (kg)	0.89 kgs/pc
Length (m)	2.4m/pc
Material	PP (Polypropylene)
Thickness (mm)	4mm



# Product Description

Moonbay Snapping Edge is a contractor grade edge restraint designed to be used with paving units 2" - 3 3/4" (50mm-95mm)in height. Its injection molded design made of 100 % recycled PP (polypropylene) has built-in features that provide strength and stability. This Edge can be used on straightaways, curvesand even a complete radius without waste.

FEATURES	BENEFITS
<b>Snap with each other</b>	<ul style="list-style-type: none"><li>· Only One Piece to Inventory</li><li>· Use On Straightaways, Curves &amp; Complete Radius</li><li>· Less Waste</li></ul>
<b>Rugged Injection Molded Pp Design</b>	<ul style="list-style-type: none"><li>· Resists Warping</li><li>· Ensures the Strongest Edge</li></ul>
<b>Strong interlocking integrated joint</b>	<ul style="list-style-type: none"><li>· Makes a Secure Connection without Extra Parts</li><li>· Continuous Edge Keeps Bedding Material in Place</li></ul>
<b>Reinforced Nail Bosses</b>	<ul style="list-style-type: none"><li>· Securely Holds Edging Together</li></ul>
<b>Open Base Design</b>	<ul style="list-style-type: none"><li>· Allows for Grass Growth Along Edge of Paving</li><li>· Units Creating a Strong Yet Invisible Edge</li></ul>
<b>Simple To Install</b>	<ul style="list-style-type: none"><li>· Can Be Installed Before or After the Paving Units Have Been Laid</li><li>· Installs with Spikes</li></ul>

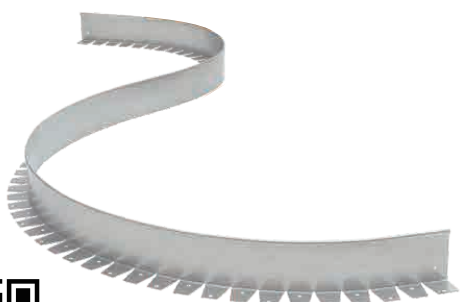
Moonbay snapping edge is designed for residential & commercial paver, stone and porcelain installations on aconventional base and is the ideal edge restraint for walkways, patios, courtyards and driveways withresidential levels of vehicular traffic.

CAUTION: Do not use alongside freshly place asphalt due to the high temperatures of the asphalt (HDPE melting point is 250 °F (121 °C)).



# Stainless Steel Edge System

Stainless steel edge system is stronger than aluminium and traditional edging materials. It is also high strength, good quality, weather resistance and durability.



Garden Edging System



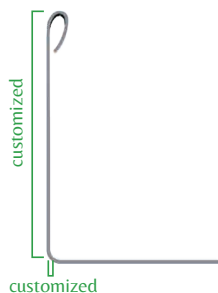
Stainless steel edge system

## Advantages:

- 1. Made with 304/201 stainless steel longer lifetime.
- 2. Corrosion and rust resistant for your installation.
- 3. Quick & simple installation, no digging required.
- 4. Easily makes curves and straight sections in DIY landscaping projects. Suitable for all soil types.



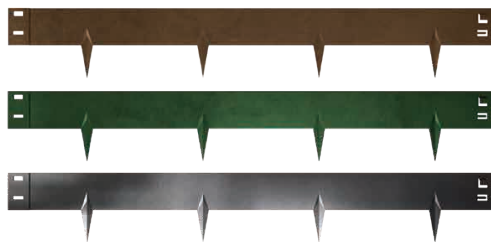
## Available sizes:



Product	stainless steel edge system
Package	carton package
Height (mm)	customized
Weight (kg)	/
Length (m)	1.0m/pc, customized
Material	304/201 Stainless steel
Thickness (mm)	0.5/1.0 mm, customized

# Weatherproof steel edge system

Weatherproof steel originated from corton steel in north America and is a series of low alloy steel between common steel and stainless steel.



## Advantages:

- 1.The corten steel edge domestic range is manufactured from 1.6mm mild steel and is hardy enough to handle ride on mowers and light vehicles.
- 2.This flexible steel edging can be quickly installed with no specialist tools required.
- 3.Easily forming both straight lines and curved radiuses, or bent on site to form precise angles.
- 4.It provides the perfect edge restraint in a variety of landscaping applications.
- 5.All of our edgings except our weathered steel (Cor-Ten effect) have a 20-micron Galvanised Zinc coating.
- 6.Our coloured edgings have a further 110-micron UV resistant polyester powder coating preventing colour fade, forming a durable scratch resistant barrier to guarantee a 20yr plus product life.



## Available sizes:

Product	Rust Metal Corten Steel Garden Edging
Package	packed with wood box or carton box
Height (mm)	100/150/160/180/250 mm
Weight (kg)	1.9/2.3/2.4/2.6/2.9
Length (m)	1m
Material	Corten Steel
Thickness (mm)	2.0mm

## colours



Green



Black



Brown

# Aluminium garden edge system

Moonbay Aluminum Edge is an economical paving restraint system with an elegant edging finish. It's with 2 base options to be used for both straight and gentle curvilinear applications.

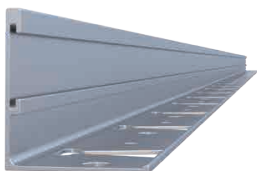
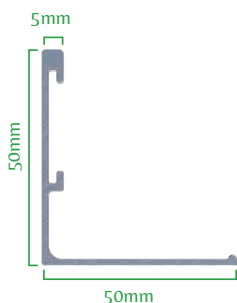


## Advantages:

- 1. With a 5mm top edge, its strong structure and durability making it applicable for paving restraint.
- 2. With 2 base options to be used for both straight and curvilinear application.
- 3. Strong corrosion resistance and good weather resistance making it ideal for outdoor and harsh conditions.
- 4. Lightweight, easy to transport, install, and maintain.
- 5. With a smooth and even surface, easy to clean and offers a good decorative effect.



## Available sizes:

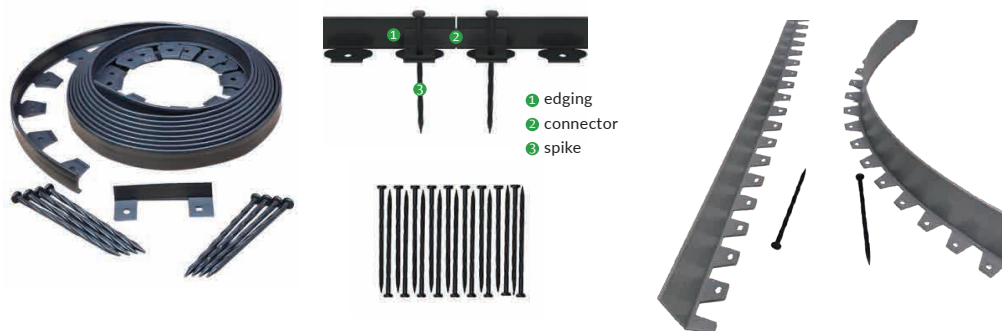


Product	aluminium garde edge system
Package	carton package
Height (mm)	50mm/customized
Weight (kg)	/
Length (m)	2.2m/pc, customized
Material	aluminium
Thickness (mm)	1.5/2.0 mm, customized



# Plastic Garden Edge System

Made of NEW MATERIAL PE/TPE, Create the shapes you want, from intricate curves to endless straight lines, even right angle bends without a cut and join. At the same time, it is cost-effective, wide range of applications, installation is very convenient.

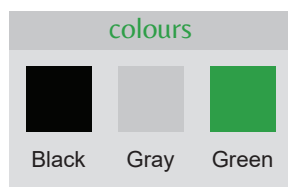


## Advantages:

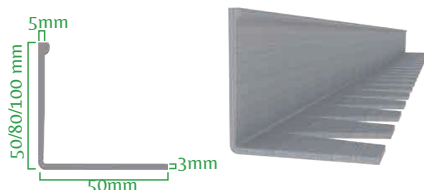
- 1. Quick & simple installation, no digging required.
- 2. Easily makes curves and straight sections in DIY landscaping projects.
- 3. Made of flexible & durable recycled plastic.
- 4. Suitable for all soil types.



Plastic garden edge system



## Available sizes:



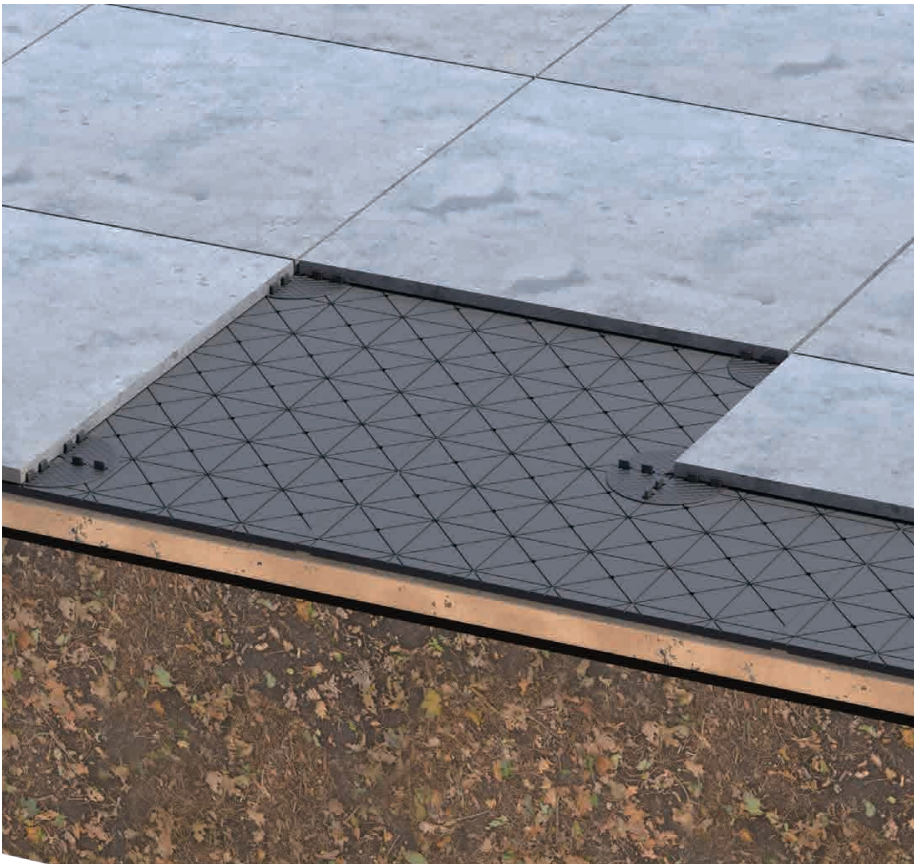
Product	Plastic garden edge system	Plastic garden edge system
Package	0.21 kgs/m, box size 32x32x12cm, 10m/box	carton package
Height (mm)	50mm/100mm	50/80/100 mm
Weight (kg)	2.1kg/box	0.3kg/m / 0.4kg/m / 0.5kg/m
Length (m)	10m/box	1m / 2m / 3m , customized
Material	HDPE	HDPE
Thickness (mm)	3.0mm	5.0 mm

# **MOONBASE PAVER BASE PANEL**



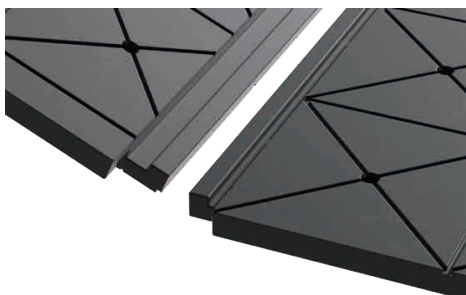
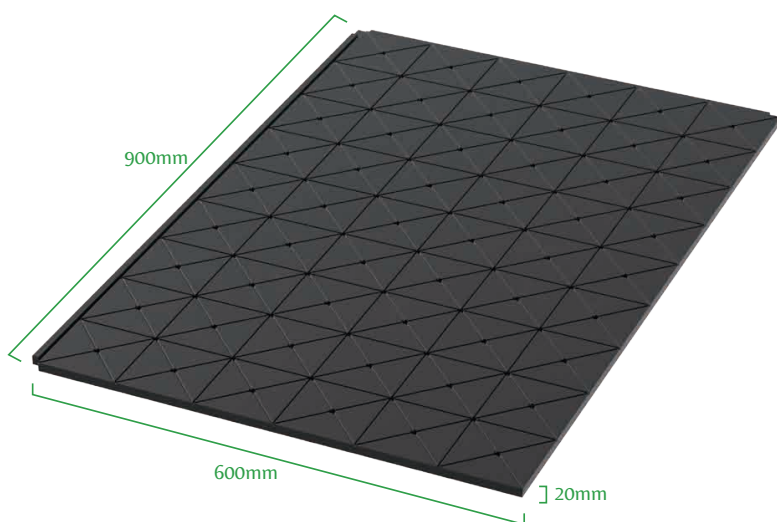
## Benefits

- 👍 Save 6" (15 cm) of extra excavation
- 👍 Save on cost of truck and driver on the road
- 👍 Save on wear and tear on machinery
- 👍 Save on costly dumping fees
- 👍 Save on overall installation time
- 👍 Save minimum 20% on labor costs
- 👍 Equivalent to a traditional granular base under dynamic loads
- 👍 Can be applied with heated paving system up to 122 °F (50 °C)
- 👍 LOCK-N-GO: designed with a tongue and groove system
- 👍 Better frost protection
- 👍 Less destructive to property during the construction phase
- 👍 Tolerant against rain showers
- 👍 Ideal for large format pavers and slabs





## Product Details



## Application:



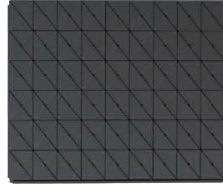


# Components



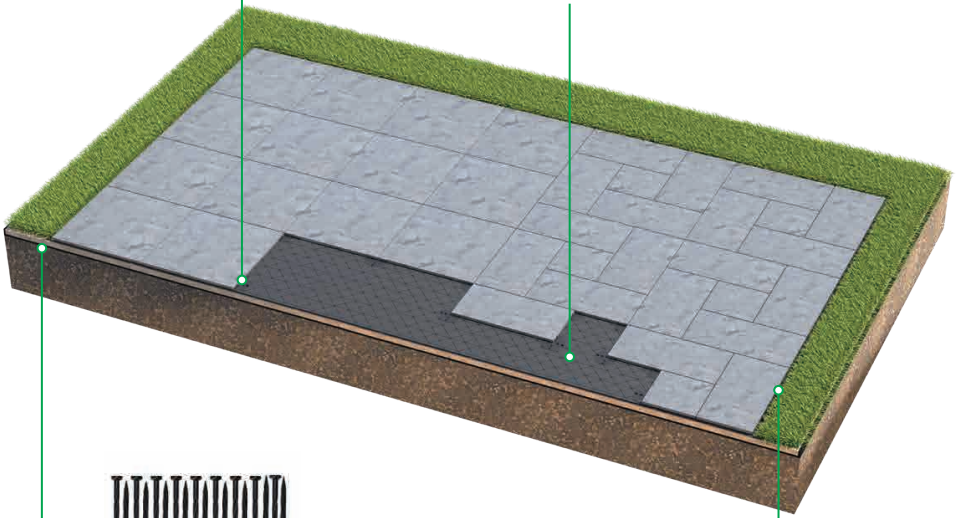
## Spacer Tabs

Creates drainage gap between pavers



## Moon Base

Reinforced support panel supports a variety of finishes



## Moonbay Edge Spike

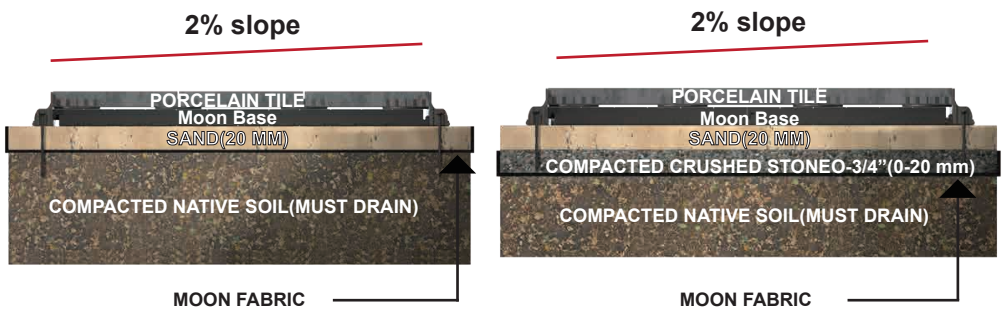
Fastening Moon Edge with the Moon Base Screws through the Moon Base



## Moonbay Snapping Edge

Reinforces the perimeter providing stability and creating a strong lateral

## Pavement section diagram:



SAND OR ASTM NO. 9 STONE CAN BE USED UNDER MOOM BASE PANELS

# Installation



## STEP 1

Excavation of the Moon Base installation area.



## STEP 2

Levelling and compacting of the base.



## STEP 3

Addition of Fabric , levelling and compacted sand.



## STEP 4

Installation of the Moon Base.



## STEP 5

Installation of pavers or brick and Moonbay Snap Edge.



## STEP 6

Finish the paver installation and filling the paver gaps with polymeric sand(for a new paver surface) .



## Project Case



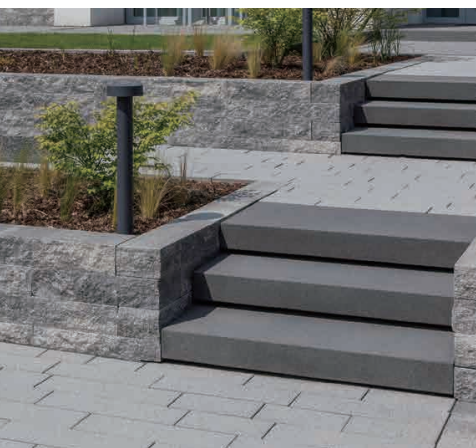
**POOLS**



**GARDEN**



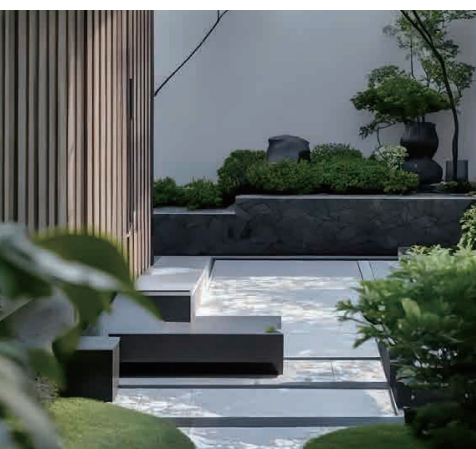
**PATIOS**



**STAIRWAYS**



**PATHWAYS**



**SIDEWALKS**



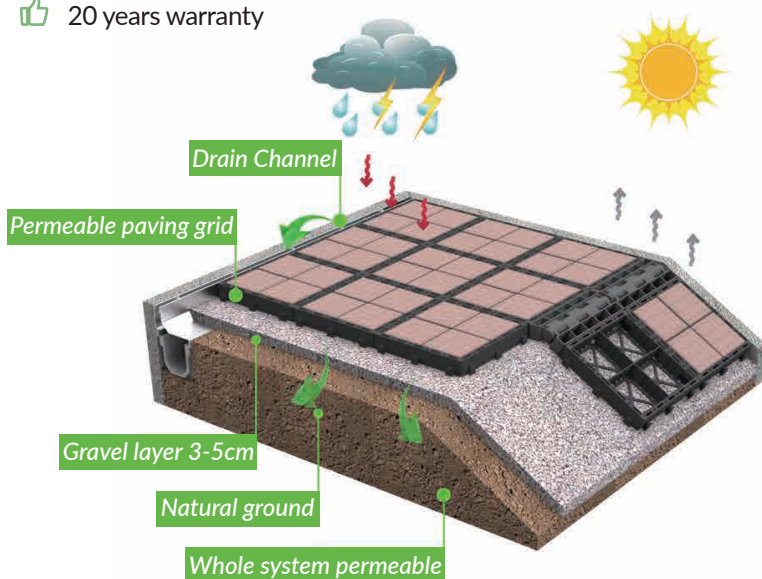
# **MOONBAY PERMEABLE PAVING GRID**





# Benefits

- 👍 Easy and quick installation (up to 100 m<sup>2</sup>/h per person)
- 👍 High resilience (up to 800 t/m<sup>2</sup>)
- 👍 Low maintenance
- 👍 Installation without heavy construction equipment
- 👍 No edging needed
- 👍 Permeable ground reinforcement
- 👍 Low transport and handling costs
- 👍 Versatile applicable, accessories available
- 👍 Weatherproof and unbreakable
- 👍 Safety interlocking, 36 notches per m<sup>2</sup>
- 👍 UV-resistant and frost proof
- 👍 Immediately green area
- 👍 20 years warranty

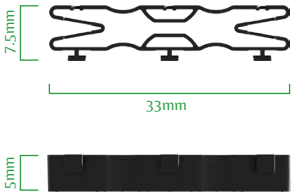
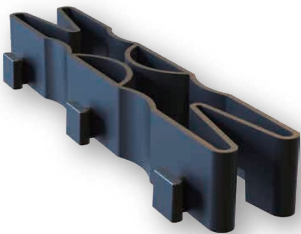
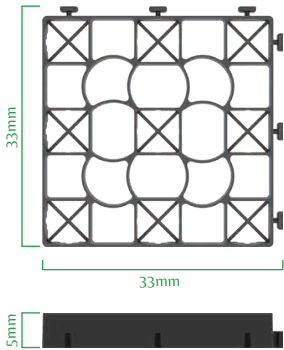


# Specifications



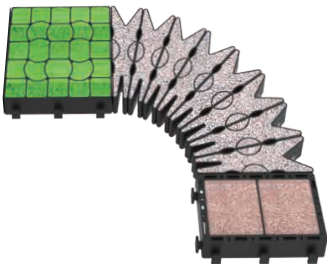
## Permeable landscape grid

Type	Moonbay
Dimensions	33cm x 33cm x 5cm
Dimensional stability	-50 °C / 90 °C
Filling	Fill with gravel-glue-mix, screed redundant material
Available colors	grey,white,red,dark grey



## Turn accessory

Type	Moonbay
Dimensions	33cm x 7.5cm x 5cm
Dimensional stability	-50 °C / 90 °C
Filling	Fill with gravel-glue-mix, screed redundant material
Available colors	grey,white,red,dark grey



## Click Interlocking Connection

1



2



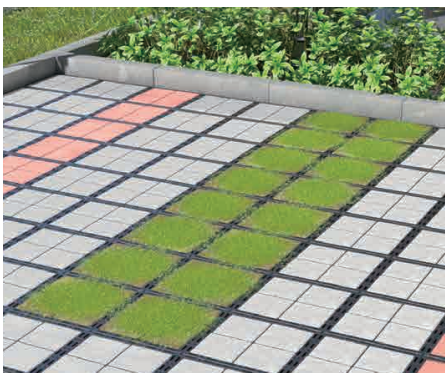
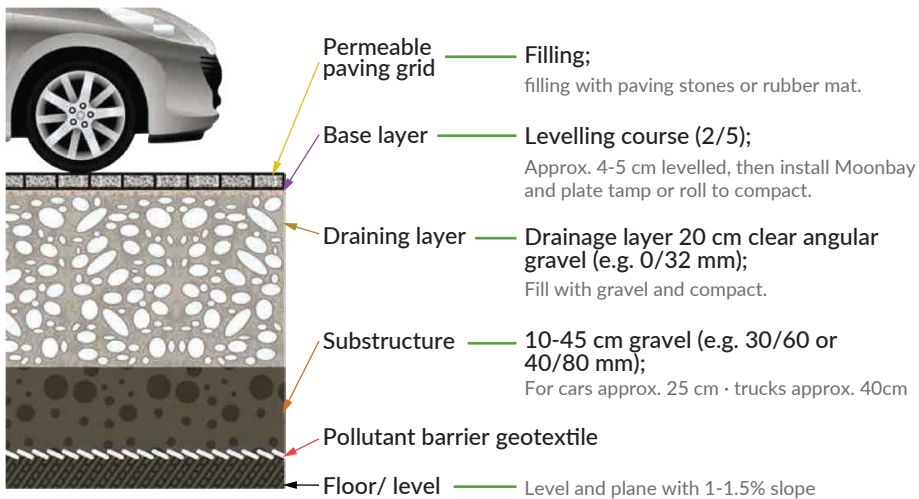
Moonbay permeable paving grid system can be installed quickly and easily without heavy construction equipment. One pack is equal to 1.33 m<sup>2</sup> and consists of 12 single pieces (4x3).

The weight of each pack is low and the click interlocking works quickly and easily.





# Click Interlocking Connection

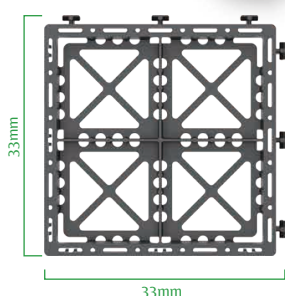
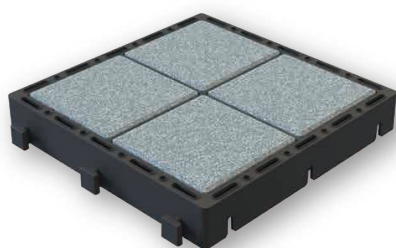
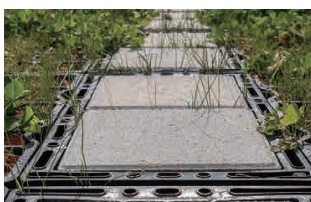
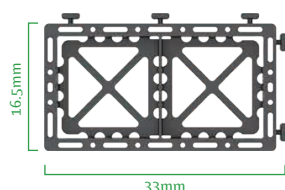
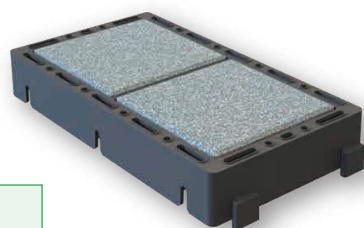




# Specifications

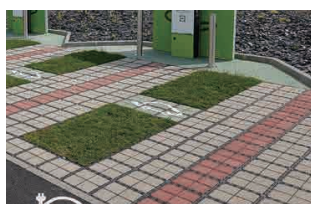
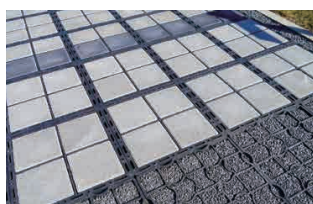
## 1/2 Permeable paving grid

Type	Moonbay
Dimensions	33cm x 16.5cm x 5cm
Weight/m <sup>2</sup>	appro..85kg
Dimensional stability	-50°C / 90°C
Block dimensions	140x140x50mm (pieces)
Available colors	grey,white,red,dark grey
Special	rubber inserts available



## Permeable paving grid

Type	Moonbay
Dimensions	33cm x 33cm x 5cm
Weight/m <sup>2</sup>	appro..85kg
Dimensional stability	-50°C / 90°C
Block dimensions	140x140x50mm (pieces)
Available colors	grey,white,red,dark grey
Special	rubber inserts available





Profession



Honesty



Innovation

Hangzhou Moonbay Industrial Co., Ltd

Ph/whatsapp: +86 176 8231 3725

Email: [frank@chinamoonbay.com](mailto:frank@chinamoonbay.com)

Web: [www.moonbayjack.com](http://www.moonbayjack.com)

Add: Hangzhou,ZheJiang,China