

## Drain Channel System

---

HANGZHOU MOONBAY INDUSTRIAL CO., LTD.

**SINCE 2013**

# MoonBay Profile

Hangzhou Moonbay Industrial Co., Ltd is a professional construction material manufacturer integrating obligation with R&D, design, production, sale, and service.

Since its **establishment on July 25, 2013**, we have over **50 engineers** and **more than 150 workers**, the company has developed and produced products such as PP/HDPE Drain channel, Garden edge, Paver base panel, Permeable landscape/paving grid, Polymer concrete drain channel, Steel pedestal, Adjustable pedestal, Manhole cover, Aluminum decking, Tile leveling system, etc... with **32 innovative patents**.

Being honest, professional, innovative and positive is our business concept. Offering great quality products and excellent service is one of our mission.

Moonbay factory located in Zhuji, Shaoxing with **13000 SQM area**. There are over **60 automatic production Lines**. Moonbay building materials support **10,000+ projects** every year. It's now world-famous brand and hot selling in Europe, Asia, Australia, North America. We look forward to cooperating with you.



**13000+**

13000 SQM area factory



**30+**

Innovative patents



**60+**

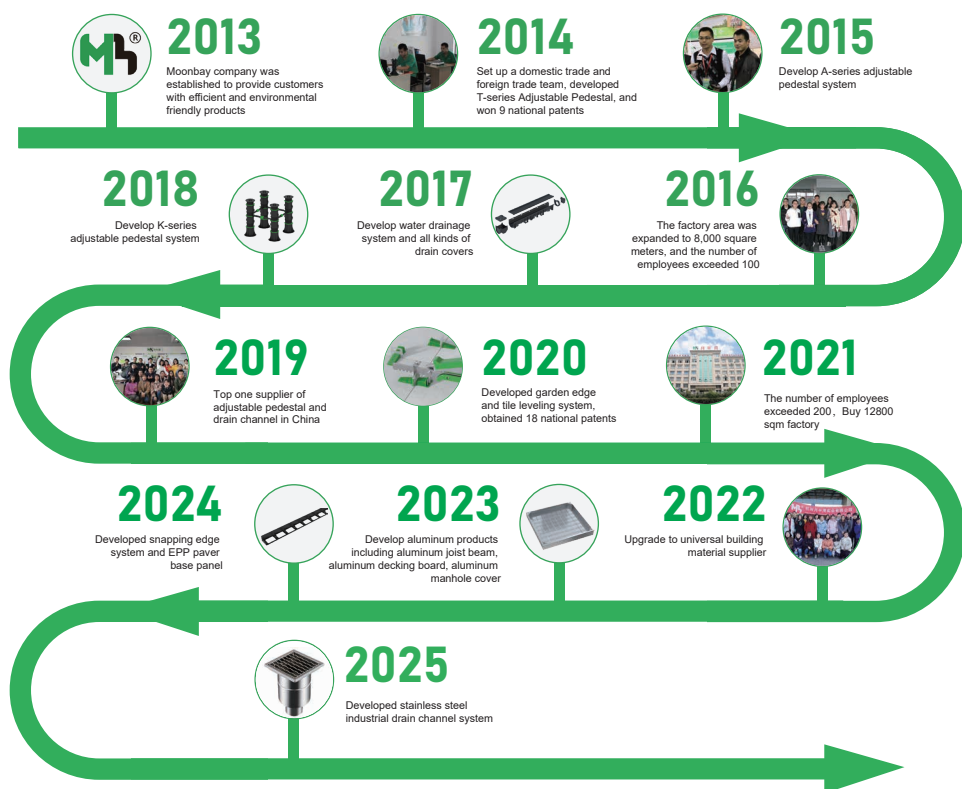
Automatic production Line



**60+**

Sales around the world





## Moonbay CSR Commitments ...

Moonbay CSR policy-initiated over ten years ago-is broken down into 5 commitments, deployed across all of the Group's businesses

Think  
Ethics

- Develop sustainable product and service
- Be part of a circular economy
- Reduce Greenhouse Gas emissions

Think  
Safe

- Encourage and sustain the commitment of our employees
- Promote diversity and inclusion
- Guarantee health & safety in the work-place

Think  
Green

Think  
People

Think  
Partner

- Help our partner success
- Be active in the local value creation
- Quick response to customer needs

- Comply with the rules of business conduct
- Be an actor in the prevention of corruption
- Ensure ethics in our relations with third parties

- Guarantee safety and health for our partners
- Comply with the directives of the authorities
- To be a recognized and quality supplier





**STRONG  
AND EASY  
DRAINAGE**



# Product Advantages



## Ease Of Assembly

The modular design of Moonbay drain channel is made of PP/HDPE, it is 80% lighter than the traditional concrete channel. This makes the assembly and installation fast, easy, saving time and money.



## Recyclable

Moonbay drain channels are made of 100% recyclable plastic material that can be used again in the manufacturing process, therefore protecting the environment and future generations.



## Hydraulic Performance

The smooth rounded internal surface of the Moonbay water drainage systems creates higher rates while allowing a self-cleaning action thus avoiding the accumulation of silt deposits.



## Chemical Resistance

Due to Moonbay's superior Polypropylene construction, it is able to resist most chemical agents, acids, salts, alkaline, fuels, oils, fats, etc.



## High Strength

The advanced construction of the Moonbay drainage channel gives it greater structural rigidity, protecting it from damage during and after installation.



## Lightweight

Being manufactured from lightweight material, has the added advantage of being easier to handle, transport, and install.

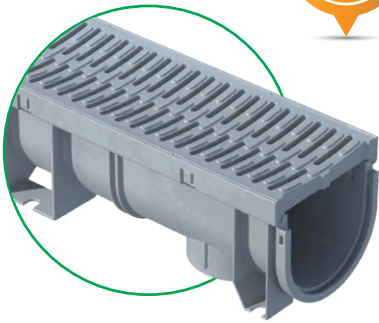


## Lockdown

4 point security lockdown for Anti-Theft peace of mind.

# Recessed Accesss Cover

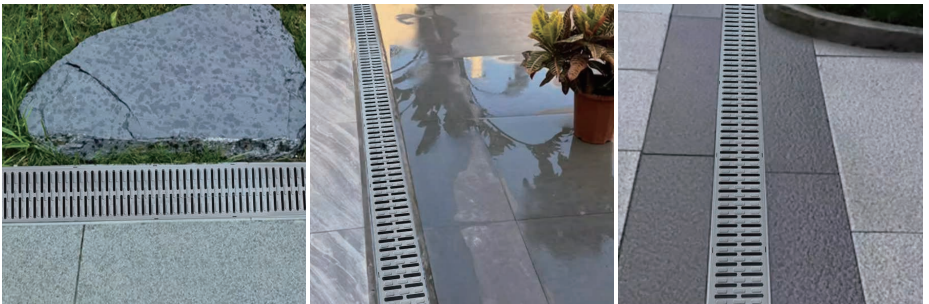
## **DESIGNED FOR A STRONGER AND EASIER DRAINAGE SOLUTION**



- ✓ All products are "UV" inhibited
- ✓ Grates are heel friendly
- ✓ bottom outlets in every channel
- ✓ No clips or screws required to assemble

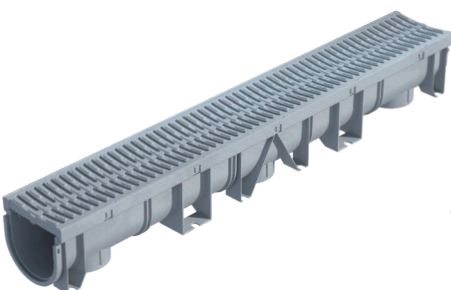
## **Improve Drainage:**

The durability & high performance of the newly designed for a stronger and easier drainage solution.



*Patios • Swimming Pools • Sports Courts • Gardens • Walkways*

## **Solid Colour Range:**



• Grey

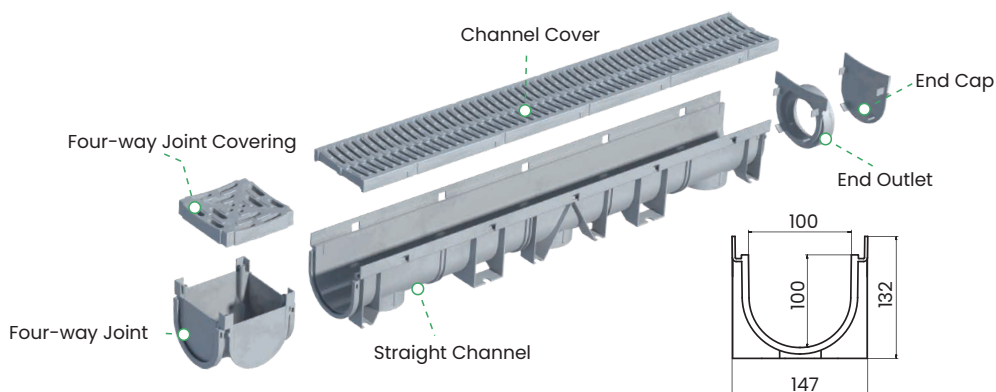


• Black

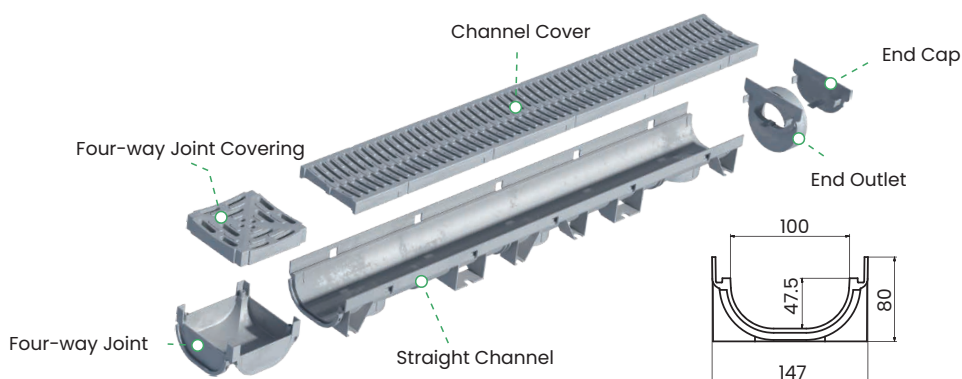


# Drainage Ditch Details

## ID 100x100x1000mm drain channel



## ID 100x45x1000mm drain channel



HOT



Hot Sell  
ID 100 series

© Plastic Cover

© Iron Cast Cover

© Galvanized Steel Mesh Grate Cover

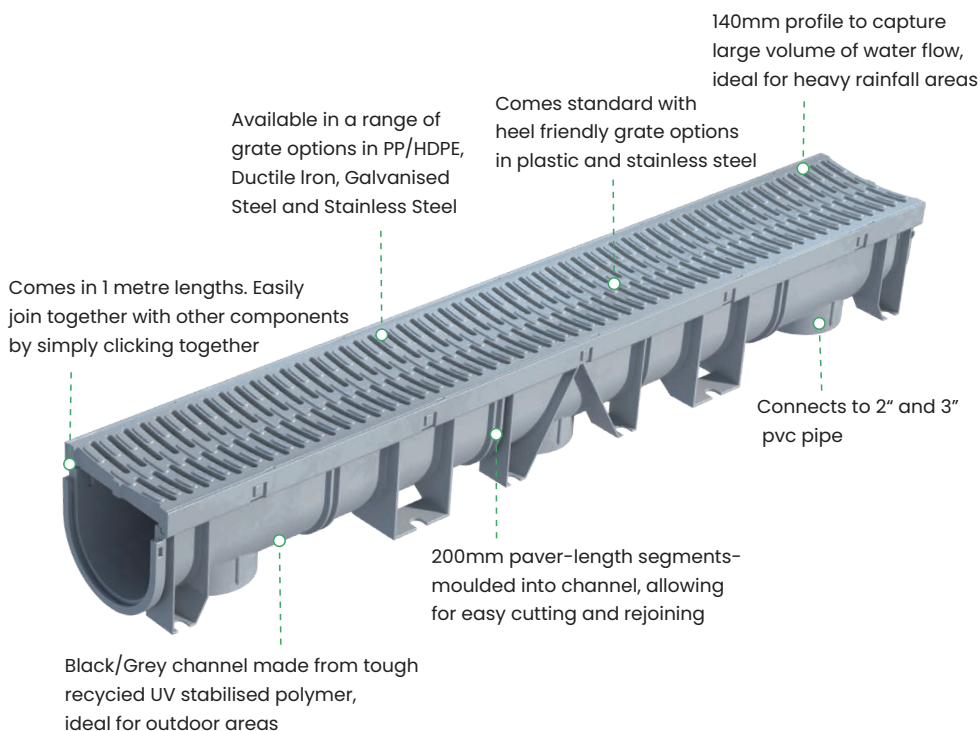
© Galvanized Steel Grate Cover

© Heel Proof Mesh Grate Cover

© Slot stainless steel cover

© Stainless Steel Grate Cover

# Drainage Ditch Details



## Four-way Joint

Connects to the Moonbay drain channel, allows left or right extension of the channel, the required openings are easily cut out.



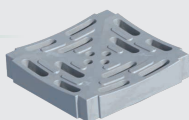
## End Outlet

Allows for stormwater pipe connection at the end of the drain channel



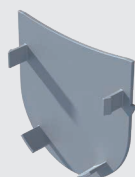
## Four-way Joint Covering

Provides a cover for the Four-way Joint



## End Cap

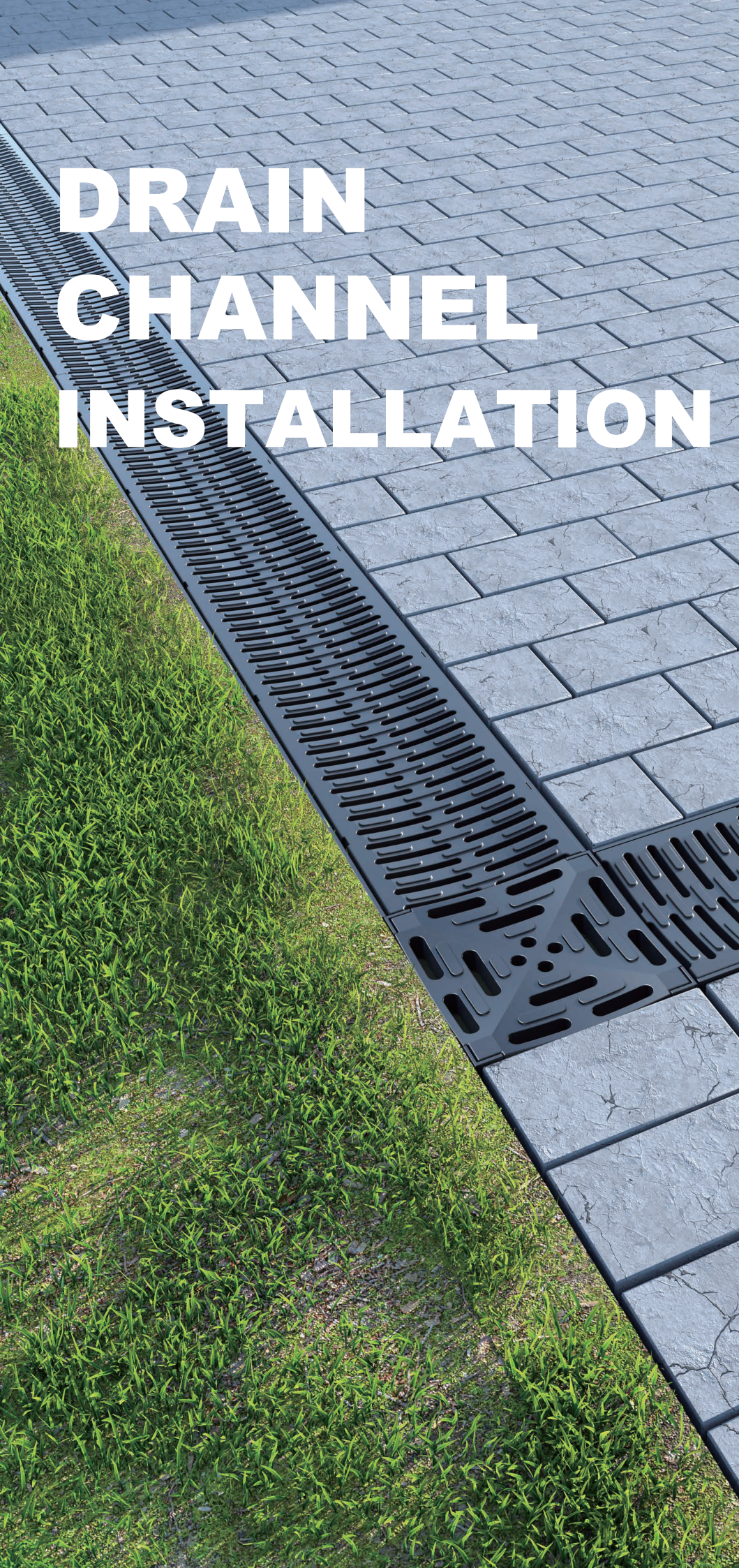
Provides a finishing point at the end of the drain channel, slide into the female end of the Channel and have tabs to fit into the male end or the cut to length end of the Channel.



## package:







# DRAIN CHANNEL INSTALLATION



## Tool/Product/Accessory



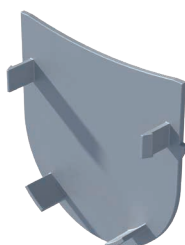
Drain Channel



Four-way Joint



End Outlet



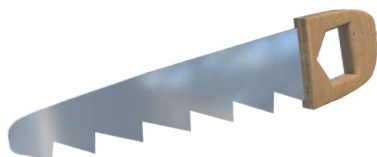
End Cap



Plastic pipes



Hole Saw



Saw



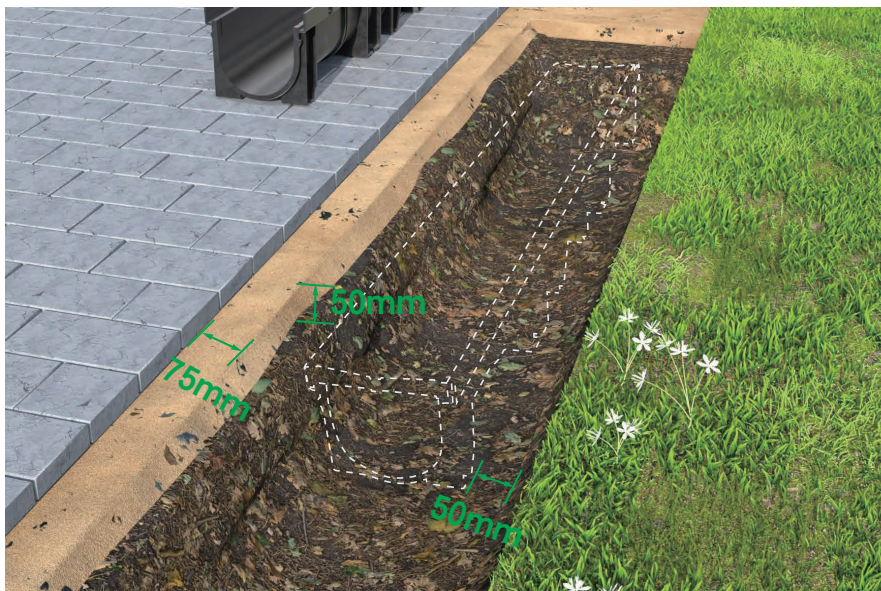
polyurethane sealant



# Installation instructions

## Prepare:

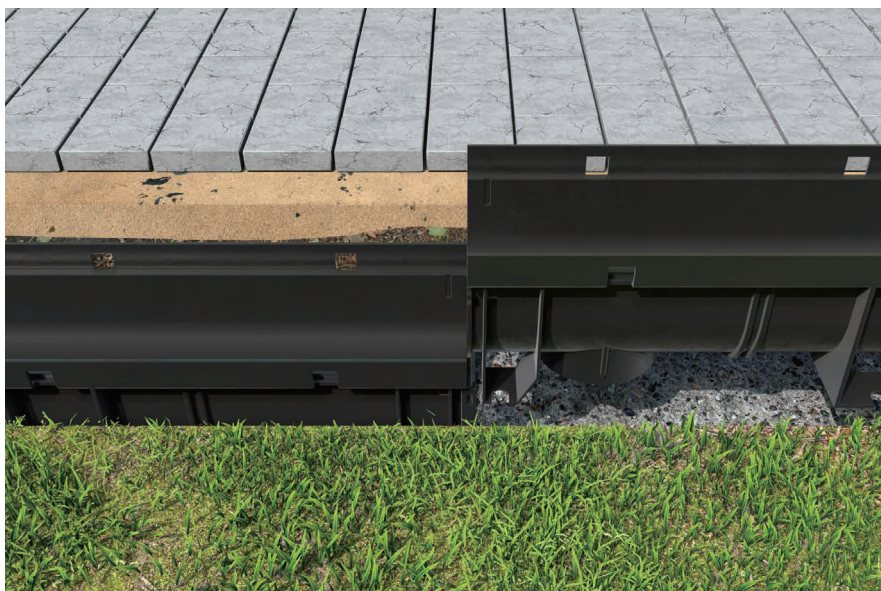
- A: Dig your trench 50mm deeper and wider than the channel being installed and not less than 75mm wider than the width of the channel at its lip.



- B: Slope the trench at a ratio of 1cm for every 1m of channel.
- C: Pour concrete slurry in the base of the trench.
- D: Use a string line to ensure straightness and the correct finish height.

## Connecting End Cap or End Outlet:

- A: Drain channels tightly interlock with each other by a secure built-in joining system.

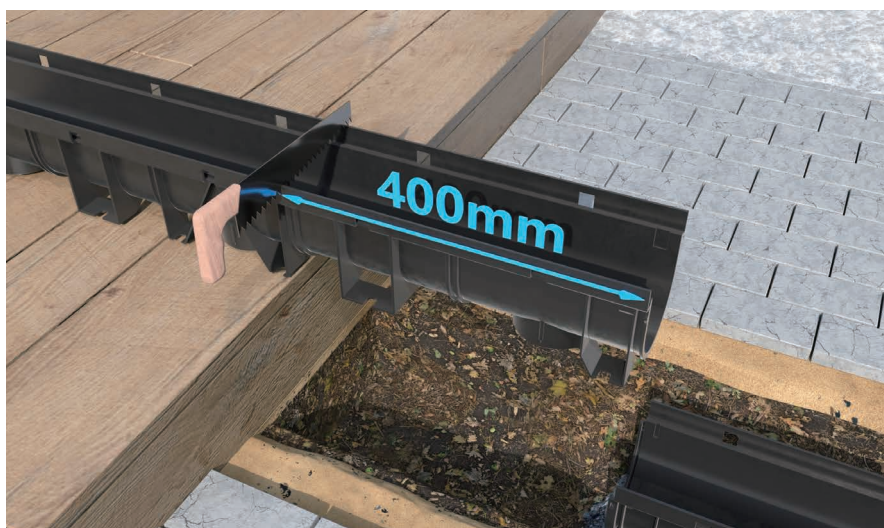




- B: By cutting the side panel, flexible four-way joint can also be used as two-way or three-way connector.



- C: Measure the length when it is less than 1 meter. Use a saw to cut between the ribs that are 400mm from the female end.



- D: Install the end cap at finish point of the channel Use a hole saw to drill a hole at the bottom of drain channel.





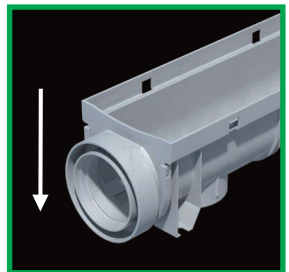
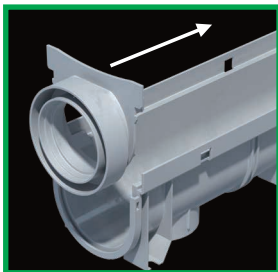
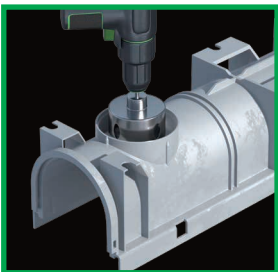
- E: install the Pvc pipe connector.



- F: Install the end outlet.



- Note: Use an End Cap to create an end point for your drainage system and seal with silicone. Use an End Outlet to connect with the PVC pipe for water drainage.



- If the drain channel is installed on a raised balcony all channel and component joints must be sealed using a polyurethane sealant (eg: Sikaflex). If installed without the sealant potential damage to the property can occur from water seepage and warranty will be void.

## Finish:

- A: Place suitable expansion material such as a closed cell foam along the top edge of the channel running the entire length of channel, approximately 75mm wide and 10mm thick, then attach to channel with adhesive tape. This will assist with the removal of the grate when required.
- B: Pour concrete down each side of the channel, ensuring the base is completely immersed.



- C: Lightly compact and finish the concrete approximately 2-3mm above the surface level of the grate to promote run off from surrounding area into drain.





## Installation tips



### WATER FLOW

When determining water flow you will need to consider the following variables that may increase the volume of water flowing into your drainage system: the type of soil; the slope of the land; the size of the stormwater pipes; and the number of stormwater pipe connections.



### REMOVING GRATES

For cleaning and maintenance purposes, grates can only be removed if they have been installed using a suitable expansion material. To remove grate, place the tip of a screw-driver into the flange, where the grate and channel connect. Gently push the edge of the channel outwards until the grate pops out. Repeat this for each flange along the channel.



### PRE-EXISTING CONCRETE

If installing Drain Channel against pre-existing concrete or pavers, it is recommended that you 1. Dig your trench with enough room for drainage plus an additional 15–20mm below surface level 2. Pour concrete into the base of the trench and place in Drain Channel and Grate 3. Push the channel and grate down into the concrete, allowing for excess concrete to push up the side of the channel away from the existing concrete.



### TRAFFICABLE AREAS

If you are installing your drain channel in an area that may receive some vehicle traffic such as a driveway, you will need to ensure that you install your channel in concrete. For driveways, we recommend our range of polymer grates/stainless steel grate/ductile iron grate. Refer to installation instructions above.

PLEASE NOTE: Please check spec packs for specific details regarding each grates Class rating. For drainage that allows for Class D traffic, view our heavy duty series [www.moonbayjack.com](http://www.moonbayjack.com).





Profession



Honesty



Innovation

Hangzhou Moonbay Industrial Co., Ltd

Ph/whatsapp: +86 176 8231 3725

Email: [frank@chinamoonbay.com](mailto:frank@chinamoonbay.com)

Web: [www.moonbayjack.com](http://www.moonbayjack.com)

Add: Hangzhou,ZheJiang,China